

- All dimensions must be checked on site by the contractor prior to construction
- Do not scale off this drawing for construction purposes
- Any discrepancies between drawings and / or specifications should be reported to the designer prior to any work commencing

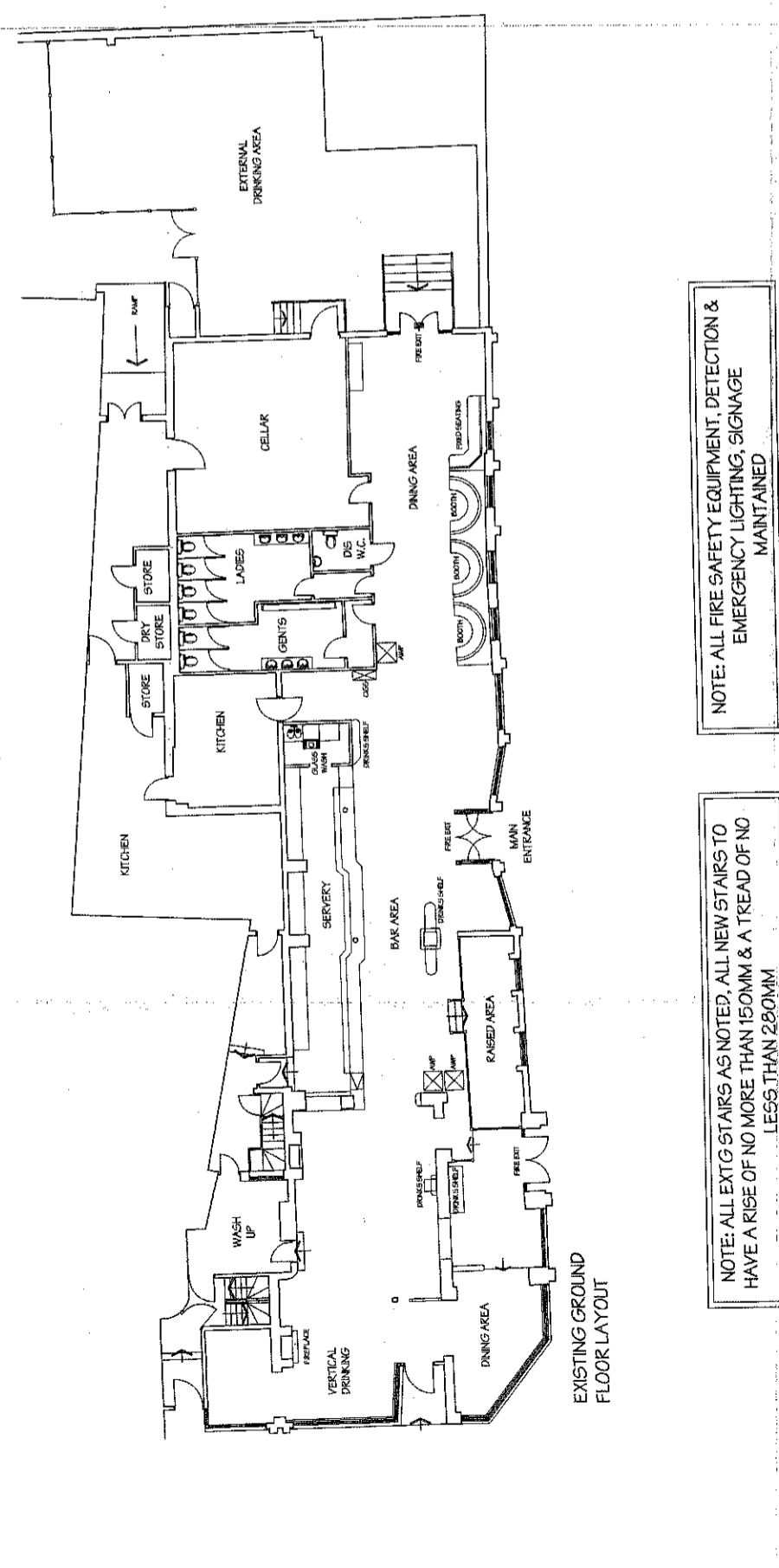
Proj. No: 10/07/07  
Date: 10/07/07

**FIRE SAFETY STANDARDS**

1. DOORS & PARTITIONS REQUIRED TO BE FIRE RESISTING ARE TO BE IN ACCORDANCE WITH BS 476, PART 8, 9/27 AS AMENDED.

2. THE EXISTING DOORS TO THE MAIN BAR AREA MUST BE REINFORCED TO WITHSTAND THE FULL WEIGHT OF THE ROOF STRUCTURE. THE REINFORCEMENT SHALL BE FITTED WITH AN INDEPENDENT SEAL. INSTALLATION OF CERTIFICATED GLASS BLOCKS TO THE MAIN BAR AREA SHALL BE IN ACCORDANCE WITH THE MANUFACTURER'S INSTRUCTIONS.

3. PORTABLE FIRE EXTINGUISHERS SHALL BE PROVIDED IN ALL PARTS OF THE BUILDING. THE FIRE EXTINGUISHERS SHALL BE OF THE FOLLOWING TYPES: 1. 2. 3. 4. 5. 6. 7. 8. 9. 10. 11. 12. 13. 14. 15. 16. 17. 18. 19. 20. 21. 22. 23. 24. 25. 26. 27. 28. 29. 30. 31. 32. 33. 34. 35. 36. 37. 38. 39. 40. 41. 42. 43. 44. 45. 46. 47. 48. 49. 50. 51. 52. 53. 54. 55. 56. 57. 58. 59. 60. 61. 62. 63. 64. 65. 66. 67. 68. 69. 70. 71. 72. 73. 74. 75. 76. 77. 78. 79. 80. 81. 82. 83. 84. 85. 86. 87. 88. 89. 90. 91. 92. 93. 94. 95. 96. 97. 98. 99. 100.



**EMERGENCY LIGHTING (TO BS 5266)**

1. STAND BY ILLUMINATION (EMERGENCY EXIT SIGN) (FUNCTIONAL LIGHTING) (RELIABLE)

2. NON-DEGRADING EMERGENCY LIGHT FITTING

3. EXTERNAL ILLUMINATION (WALL MOUNTED FITTING)

**FIRE WARNING SYSTEM (TO BS 5839)**

1. FIRE ALARM CALL POINT

2. FIRE ALARM CONTROL PANEL

3. AUTOMATIC FIRE DETECTION (SMOKE)

4. AUTOMATIC FIRE DETECTION (HEAT)

**FIRE DOORS (TO BS 476)**

1. FIRE RESISTANT

**FIRE FIGHTING EQUIPMENT LEGEND**

1. PORTABLE WATER (TYPE 1) FIRE EXTINGUISHER (CAPACITY 3.6LITRES) TO BE MAINTAINED (WITH IN REACH)

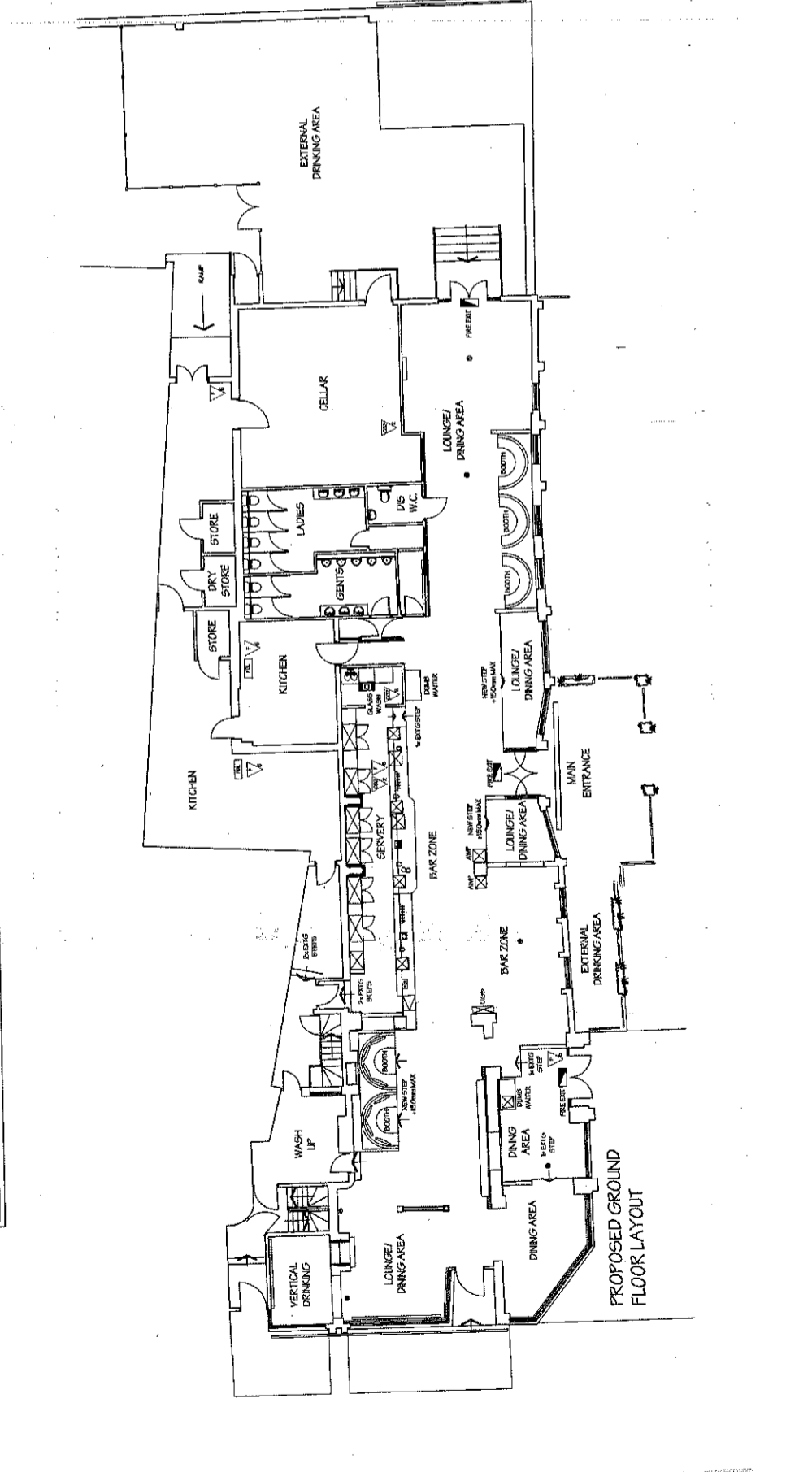
2. PORTABLE CO2 (TYPE 1) FIRE EXTINGUISHER (CAPACITY 3.6LITRES) TO BE MAINTAINED (WITH IN REACH)

3. PORTABLE WATER (TYPE 2) FIRE EXTINGUISHER (CAPACITY 3.6LITRES) TO BE MAINTAINED (WITH IN REACH)

4. PORTABLE CO2 (TYPE 2) FIRE EXTINGUISHER (CAPACITY 3.6LITRES) TO BE MAINTAINED (WITH IN REACH)

5. PORTABLE WATER (TYPE 3) FIRE EXTINGUISHER (CAPACITY 3.6LITRES) TO BE MAINTAINED (WITH IN REACH)

6. PORTABLE CO2 (TYPE 3) FIRE EXTINGUISHER (CAPACITY 3.6LITRES) TO BE MAINTAINED (WITH IN REACH)



*The Slug and Lettuce*  
**plumtree**

interior design & architecture  
The Old School House, St. Joseph's Street, Tansley, LS24 8PA  
Tel: 01157 650 172 Fax: 01157 650 165  
www.plumtree.co.uk

Created by: [Signature]  
Date: ALH  
Date: JAN '07  
Scale: 1:100  
**EX & PROP LICENSING LAYOUTS**  
THE SLUG & LETTUCE  
FARNHAM (S110322) HOGGS HEAD  
Client: LAUREL PUB CO  
Drawing No: A1087/20.01  
© Plumtree Ltd.

WAV2007.PREA-10792